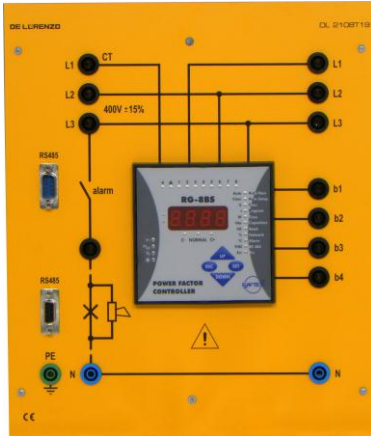




# SMART GRID



## REACTIVE POWER CONTROLLER



**DL 2108T19**

Relay for automatic adjustment of the power factor in systems with inductive load.

Power factor adjustment range: 0.9 ... 0.98 ind

Sensitivity: 0.2 ... 1.2 K

2 decimal digit display

Output relay for batteries connection: 4 NO contacts with LED indication

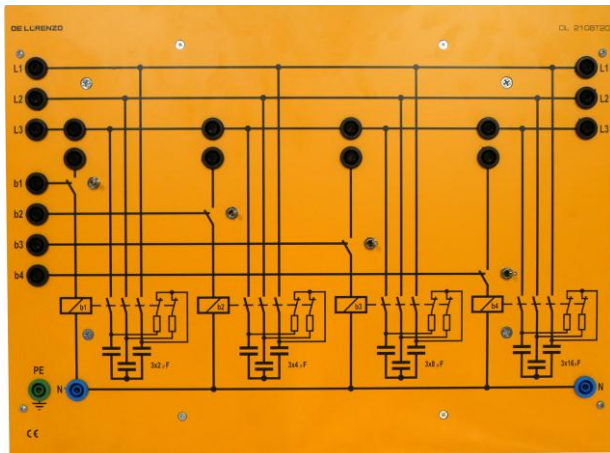
Output relay contact: 400 Vac, 5 A

Supply voltage: three-phase from mains

Amperic input circuit: 5 A (250 mA min.)

Automatic detection of the frequency.

## SWITCHABLE CAPACITOR BATTERY



**DL 2108T20**

Switching system with which different capacitance values can be connected to the mains for reactive power compensation.

Four switching levels each consisting of 3 capacitors in star connection with discharging resistors:

level 1 (b1 coil): 3 x 2 μF/450 V

level 2 (b2 coil): 3 x 4 μF/450 V

level 3 (b3 coil): 3 x 8 μF/450 V

level 4 (b4 coil): 3 x 16 μF/450 V

Compensation power: max 1360 VAR at 50 Hz, 380 V

Each switching level can be controlled separately: internally, through 4 toggle switches, externally, through 4 control inputs

Coil operating voltage: 220 Vac

## CONNECTING LEADS



**DL 1155SGWD**

Set of connecting leads.