



PC INTERFACE



DL 2650

Interface module, complete with extension board for IBM compatible PC, used for measurement and control in technical training. This module allows the connection between the digital electronics of the PC and the different signals.

Technical features:

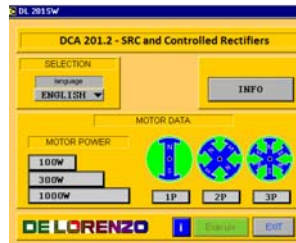
IN/OUT connector for connection to the control unit DL 2617 and display for the visualization in hexadecimal of the control word.

Two AO lines for analogue outputs: ± 10 V.

Six AI lines for analogue inputs: ± 10 V

The analogue signal is obtained from a D/A converter with 12 bit resolution. Auxiliary relay with led to show the switching status. USB connection.

POWER ELECTRONICS SOFTWARE

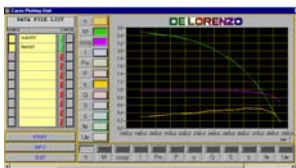


DL 201SW

With this software it is possible to measure the wave forms for voltage and current that can be found in the static inverter and converter circuits.

Through a microprocessor based interface it is possible to detect the wave forms and to send the controls to obtain trigger angles through software, in order to evaluate the different performances of the various circuits. The software features a very accurate graphic presentation and a user friendly interface with the end user.

INDUCTION MOTOR CONTROL SOFTWARE



DL 205.3SW

With this software it is possible to realize the PWM, VVC, trapezium shaped and block type, full and half frequency control of the frequency converter DL 2646 and to do the acquisition of the mechanical characteristics of the induction motor under testing.

Voltages, currents and other main characteristics are calculated both in numbers and as curves. The software features a very accurate graphic presentation and a user friendly interface with the end user.

BATTERY STACK



DL 12B12

Two rechargeable batteries, maintenance free.

Technical features:

Capacity: 1.8 Ah/12 V