



AUTOMATIC CONTROL TECHNOLOGY



Computer Interface



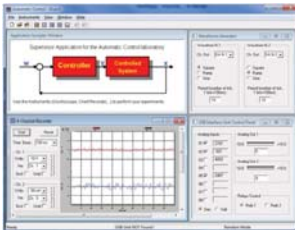
DL 1893

Interface unit: used to interconnect real world signals to a data acquisition system.

Technical features:

- 16 analog inputs: 0-10 Vdc
- 2 analog outputs: 0-10 Vdc
- 8 TTL inputs
- 8 relay outputs
- Power Supply: 220 V, 50 60 Hz
- Input/output: 2 mm terminals
- USB connection

Software



DL ACTSW

This software provides the tools to generate the control signals for the modules and to acquire and visualize the signals and the wave forms to be analyzed.

Technical features:

- Input/Output Control window.
- Signal Generator window (continuous, square wave, ramp, triangular, sinusoidal, pulse).
- 3 trace Oscilloscope window with continuous, single and trigger control operation.
- 4 channel Chart Recorder window.
- Window with the diagram of the system under evaluation with I/O controls for setting and visualizing the signals.

Leads



DL 1155-ACT

Set of leads for connecting the terminals of the modules.

Frame



DL 2100-3M

Metal frame for assembling the modules of the laboratory.