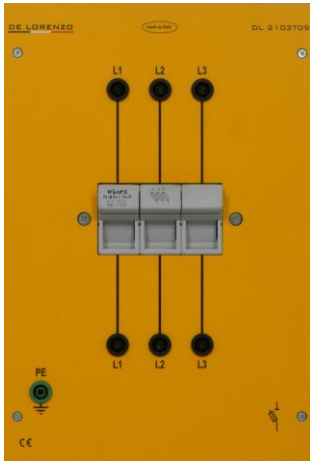




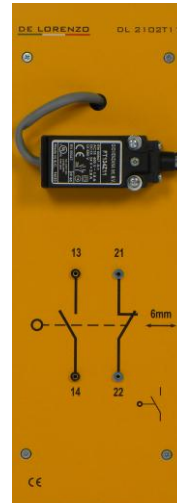
## Isolator



**DL 2102T09**

Three-pole fuse holder for 14x51 fuses, complete with cartridge fuses.  
Max. current:  
690 V up to 25 A.

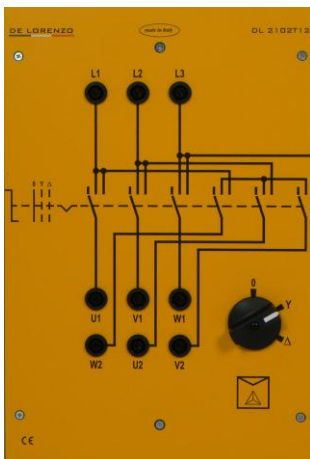
## Position Sensor



**DL 2102T11**

Limit switch with wheel piston that activates a double quick tripping switch for safety applications.  
Isolating rated voltage:  
690 V  
Conventional thermal current: 10 A  
Switching frequency:  
3600 cycles/hour

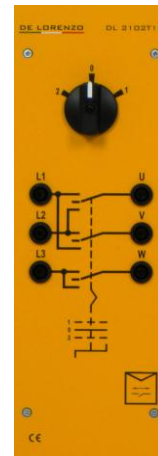
## Star Delta Starter



**DL 2102T12**

Switch for the star-delta starting of three-phase squirrel cage asynchronous motors, with only one direction of rotation.  
Rated voltage:  
690 V, 50/60 Hz  
Thermal rated current:  
12 A  
Output at 36 A safety terminals.

## Direct starter with inversion



**DL 2102T15**

Three-pole inverter for three-phase squirrel cage asynchronous motors.  
Rated voltage:  
690 V, 50/60 Hz  
Thermal rated current:  
12 A  
Output at 36 A safety terminals.