



Level Magnetic Sensor



DL 2102T20

It is made of polypropylene and the buoyant element includes a permanent magnet that activates a reed contact in the sensor.

Output: NO contact

Max. switching voltage:

1500 Vac

Max. switching current:

3 A

Max. switching power:

120 VA

Minimum specific weight of the liquids:

0.75 kg/cm²

Max pressure: 6 kg/cm²

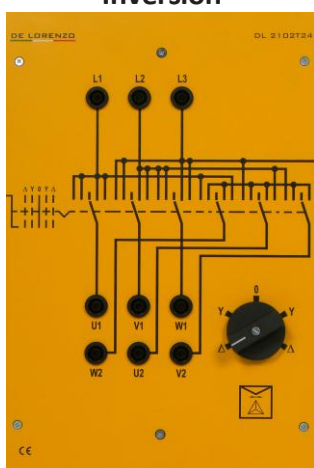
Flooding Probe



DL 2102T20RMB

Simulation of a container for liquids that can be filled up or emptied by means of a syringe. Provided with a device with three probes in stainless steel of different lengths that can be connected to the module for the control of the level.

Star/Delta Starter with Inversion



DL 2102T24

Suitable for star/delta starting with two directions of rotation of three-phase squirrel cage asynchronous motors with 3 coils stator connection.

Rated working voltage:

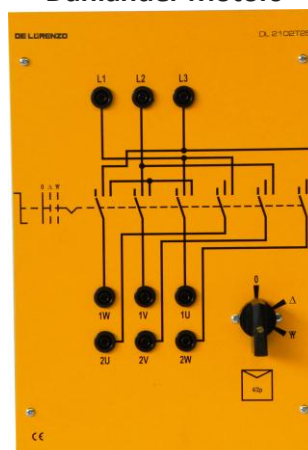
690 V, 50/60 Hz

Thermal rated current:

12 A

Output at 36 A safety terminals.

Pole Switching for Dahlander Motors



DL 2102T25

Pole switching starter for two-speed Dahlander motors.

Rated working voltage:

690 V, 50/60 Hz

Thermal rated current:

12 A

Output at 36 A safety terminals.