



Multifunction three phase overvoltage / undervoltage relay

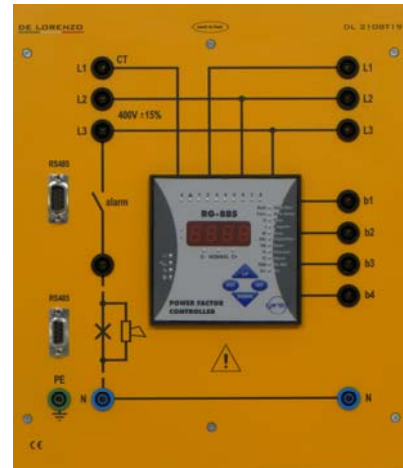


DL 2108T18

Three-phase voltage relay, suitable for protection of HV, MV, LV power transmission and distribution systems. The relay measures the true RMS value of the 3 phase to neutral voltages fed to three transformers isolated high-impedance inputs.

- Two Under Voltage elements.
- Two Over Voltage elements. One Under Frequency element.
- One Over Frequency element.
- One omopolar sequence Over Voltage element.
- One negative sequence Over Voltage element.
- One positive sequence Under Voltage element.
- Time tagged multiple event recording.
- Oscillographic wave form capture.
- Modbus RTU / IEC870-5-103.
- Display LCD 16 (2x8) characters.

Reactive power controller



DL 2108T19

Relay for automatic adjustment of the power factor in systems with inductive load.

- Power factor adjustment range: 0.9 ... 0.98 ind
- Sensitivity: 0.2 ... 1.2 K
- 2 decimal digit display
- Output relay for batteries connection: 4 NO contacts with LED indication
- Output relay contact: 400 Vac, 5 A
- Supply voltage: three-phase from mains
- Amperic input circuit: 5 A (250 mA min.)
- Automatic detection of the frequency.