



Experiment transformer



DL 1055TT

Transformer with knob to adjust the single-phase voltages. It is also possible to tap off three single-phase floating voltages by means of an isolating transformer. Provided with bridge rectifier for DC voltage output.

Outputs:

single-phase: 0 ... 250 V / 3 A

low voltage single-phase:

- 0 ... 42 V / 3 A floating or
- 0 ... 24 V / 6 A floating or
- 0 ... 12 V / 12 A floating

dc voltage: 25 A bridge rectifier for all ranges

Output protection:

2 magneto-thermal circuit breakers, 3.5 A and 0.8 A

Three-phase power supply



DL 2108TAL-SW

Power supply unit for three-phase connection with 4-pole cam mains switch.

25 A current operated earth leakage circuit breaker, sensitivity 30 mA.

Triple-pole motor protection switch: 6.3 to 10 A.

Three-phase indicator lamps.

Output through 5 safety terminals: L1, L2, L3, N and PE.

Variable DC power supply

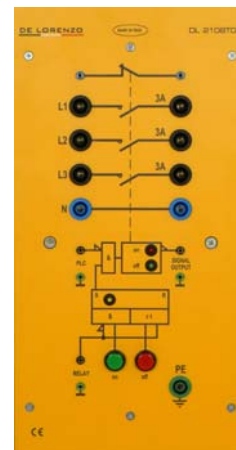


DL 2108T01

Suitable for carrying out some tests on electrical starting from 0 V by replacing the excitation rheostats.

Output: from 0 to 220 V, 0.6 A

Power circuit breaker



DL 2108T02

Three-phase power circuit breaker with normally closed auxiliary contact.

Contact load capability: 400 Vac, 3 A

Supply voltage: single-phase from mains