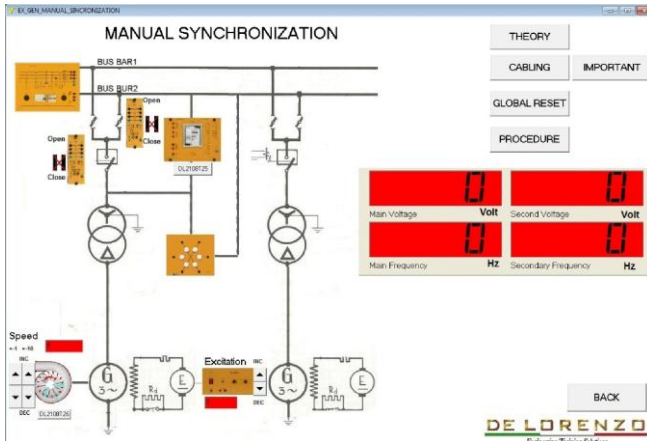




SCADA software



DL SCADA-WEB

For data acquisition and control.

Moving coil ammeter



DL 2109T1A

Magneto-electric meter for AC and DC measurements.
Scale: 50 divisions
Range: 100, 500 and 1000 mA, ac/dc
Accuracy class: 1.5

Moving coil ammeter



DL 2109T2A5

Magneto-electric meter for AC and DC measurements.
Scale: 50 divisions
Range: 1.25 and 2.5 A, ac/dc
Accuracy class: 1.5

Moving iron ammeter



DL 2109T5A

Electromagnetic meter for AC and DC measurements.
Scale: 50 divisions
The scale is made open and reasonably uniform down to about 20 per cent of the full-scale reading.
Range: 5 A
Accuracy class: 1.5