

## DL 2150 system

### DL 2150-BI

### Kit of components for the study of **biology**

#### Composed of:

#### Sensors:

- pH sensor
- Gas pressure sensor  
plastic tubing with Luer-lock fitting  
plastic tubing clamps
- Temperature probe (3 off)
- CO2 gas sensor
- Cables (for sensors connection)
- 1-hole rubber stopper

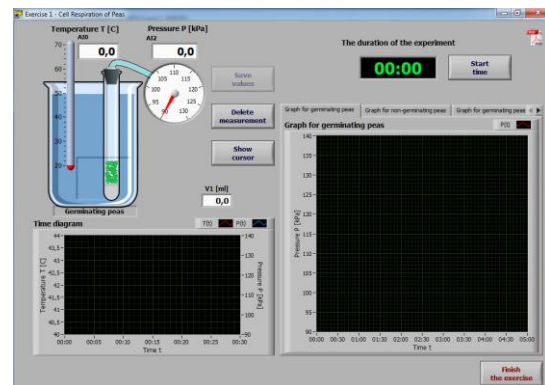
#### Other accessories:

- 18 X 150 mm test tubes (3 off)
- 10 ml graduated cylinder
- 100 ml graduated cylinder
- dropper pipette
- 1000 ml beakers (2 off)
- heater
- fan with slow speed



#### List of experiments:

1. Cell respiration (gas pressure method)
2. Transpiration
3. Effect of temperature on fermentation
4. Soil temperature
5. The Greenhouse effect
6. Enzyme action: testing catalase activity
7. Sugar fermentation in yeast
8. Acid rain
9. Acids and Bases
10. Soil pH



#### The following accessories, not supplied, must be available in the school laboratory:

- ring stand
- utility clamps
- test tube rack