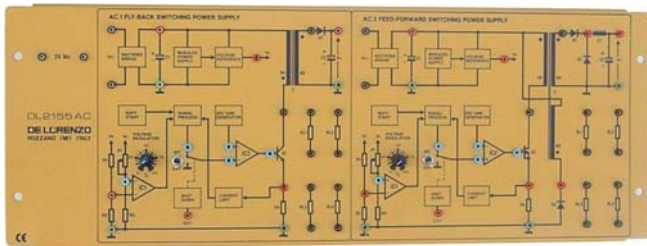




APPLICATIONS

Switching Power Supplies



DL 2155AC

Experiments

- Analysis of the operation of a flyback power supply
- Analysis of the operation of a feed-forward power supply
- Regulation of the output voltage as a function of the load or of the input voltage
- Limitation characteristics
- Detection of the typical parameters of the power supplies (ripple voltage, efficiency, etc.)

During the latest years the switching power supplies technology has been significantly developed due to the features of smaller size and higher efficiency of these power supplies when compared to the traditional ones.

This board is basically composed of two sections:

- a BJT-based flyback power supply, with output voltage adjustable from 12V to 18V by means of a potentiometer and rated current 0.5A
- a MOSFET-based feed-forward power supply, with output voltage adjustable from 15V to 18V by means of a potentiometer and rated current 0.5A

Both power supplies are provided with a current limiting circuit and with a shut-down device to switch off the voltage from the load without deactivating the power supplies control circuits. This board also includes resistive loads of different values for the detection of the output characteristics.

The board is supplied complete with a set of stackable, plug-in cables of suitable lengths and colours and with a training manual.

Power supply: 24Vac, 1A, 50/60Hz.