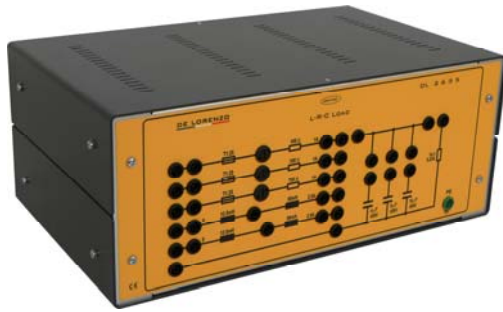




LOAD



DL 2635

Ohmic, inductive and capacitive load suitable for the experiments in the power electronics laboratory.

Technical features:

a) Load resistors:

3 x 100 Ω/1 A

Protection with fuses:

3 x T1.25 A

Possibility of connecting in series (300 Ω), in parallel (33.33 Ω) or in star and delta.

b) Load inductors:

2 x (12.5 - 50) mH/2.5 A

Possibility of connecting in series (100 mH) and in parallel (6.25 mH).

c) Load capacitors:

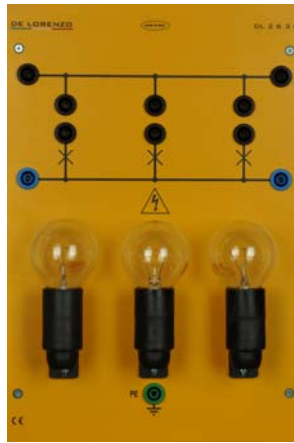
4-8-16 μF/450 Vac

Possibility of connecting in parallel (28 μF).

Discharge resistor:

1 kΩ/0.22 A

SOCKET WITH LAMPS



DL 2636

Three lamp-holders E14. Complete with three incandescent lamps: 40 W/220 V.

Possibility of connecting in parallel.

STABILIZED POWER SUPPLY

DC power supply for measuring with constant voltage the characteristics of the electrical machines.

Technical features:

The power supply has two sections:

Regulated variable voltage section, used to supply the armature of dc motors.

Output: 0 ÷ 240 Vdc, 5 A

Drive: manual or external

via 0 ÷ 10 Vdc signal

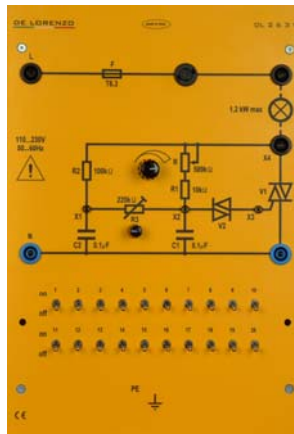
Constant voltage section, used to supply the excitation circuit of dc machines.

Output: 220 Vdc, 1 A



DL 2637

PHASE CONTROL FAULT SIMULATOR



DL 2639

Double time-constant standard light dimmer circuit consisting of triac, diac, two control potentiometers, resistors and capacitors. A total of 20 faults can be switched on using switches located behind a cover.

Typical faults:

interruptions, short-circuit, faulty components and faulty design.

Technical features:

Power supply: 110 to 230 V, 47-63 Hz

Ohmic load: 1.2 kW max