



ELECTRIC MACHINES – EUROLAB – 0.3 kW



STARTING AND SYNCHRONIZATION UNIT



DL 30125

Starting rheostat for the three-phase slip ring induction motors and excitation device for the synchronization of the motor with the mains.

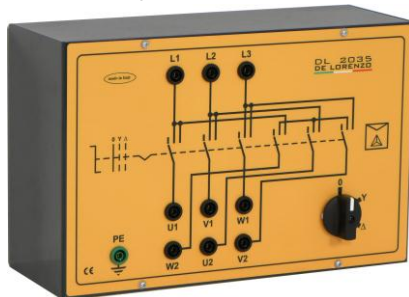
STARTING AND SYNCHRONIZATION UNIT



DL 30195

Starting rheostat for the three-phase synchronous machines and excitation device for the synchronization with the mains.

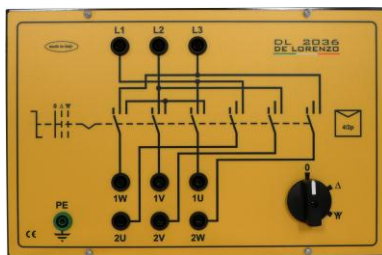
STAR/DELTA STARTER



DL 2035

Star/delta starter for the three-phase squirrel-cage induction motors

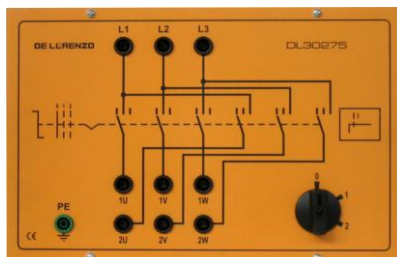
POLE CHANGING UNIT



DL 2036

Switch to change the number of poles in Dahlander type motors

POLE CHANGING UNIT



DL 30275

Switch to change the number of poles in motors with two separate windings